

Fullflow 502



Specifications and types

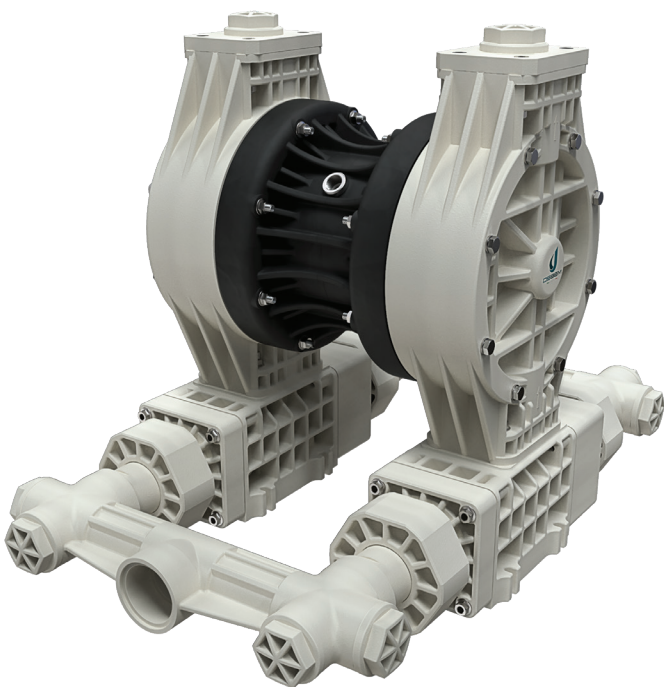


| | |
|------------------|--|
| Zone 2 – Zone 22 | II 3G Ex h IIB T4 Gc e II 3D Ex h IIIB T135°C Dc X |
| Zone 1 – Zone 21 | II 2G Ex h IIB T4 Gb e II 2D Ex h IIIB T135°C Db X |
| Zone 1 – Zone 21 | II 2G Ex h IIC T4 Gb ** |
| IECEX | Ex h IIB T4 Gb e Ex h IIIB T135°C Db |

** The Group IIC gas application string is applicable on Boxer series pumps in Conduct version with Conductive TFM diaphragms.

| | |
|---|------------------------|
| Suction / delivery connections | 2"1/2 f (BSPP) o DN 65 |
| Air fitting | 1/2" f BSPP |
| Max. flow rate* | 530 l/min |
| Max. supply air pressure | 4 bar |
| Max. head* | 40 m |
| Max negative suction head - dry-running | 3,5 m |
| Max. diameter suspended solids | 45 mm |
| Max length of solids | 600 mm |

*The curves and the performances refer to pumps with immersed suction and open delivery outlet, with water at 20°C and vary depending on material composition.



PLASTIC MATERIAL - PP (GF/CF)

Fullflow 502



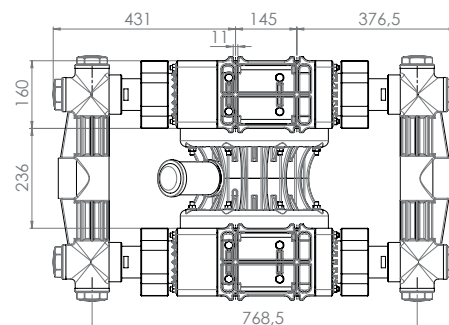
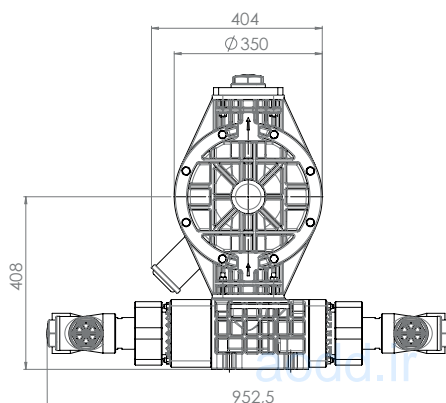
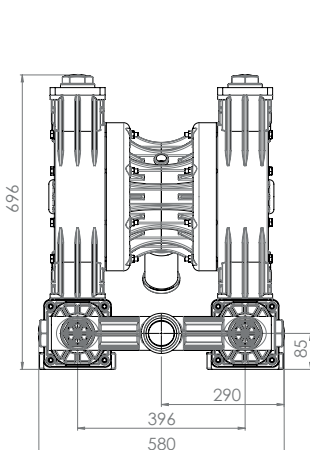
Maximum dimensions

| | |
|--------|--------|
| Height | 696 mm |
| Width | 580 mm |
| Depth | 952 mm |



Construction mat. (casing and manifolds) and net weight

| | |
|--|----------------|
| POLYPROPYLENE (with glass additive) | 55 Kg |
| | Temp. 3°C min. |
| | 65°C max |



Fullflow 502



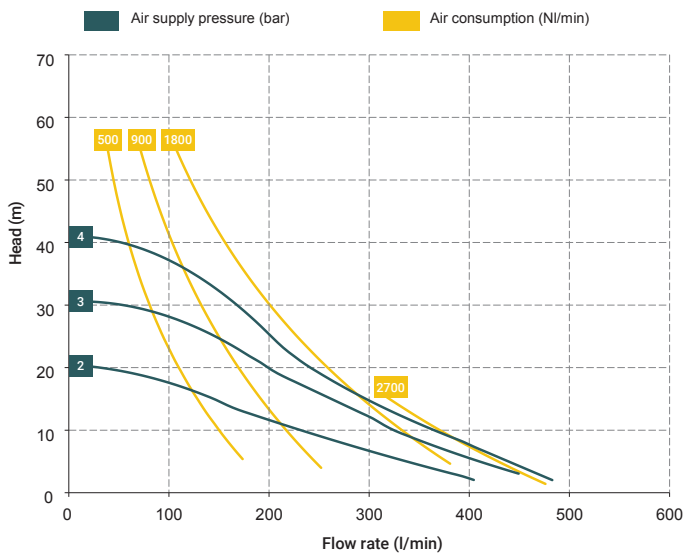
Specifications and types



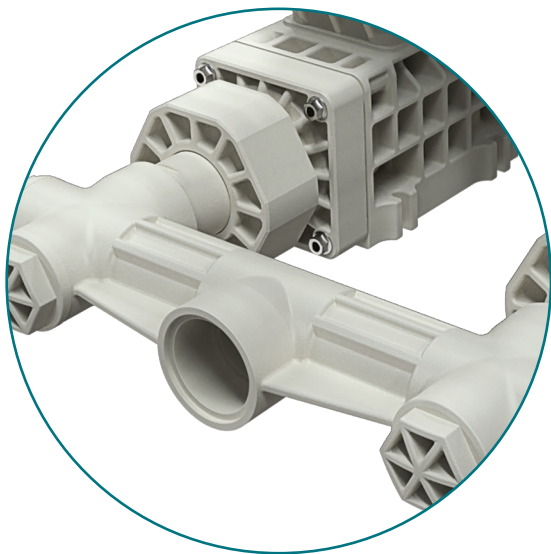
Zone 2 – Zone 22
Zone 1 – Zone 21
Zone 1 – Zone 21
IECEX

II 3G Ex h IIB T4 Gc e II 3D Ex h IIIB T135°C Dc X
II 2G Ex h IIB T4 Gb e II 2D Ex h IIIB T135°C Db X
II 2G Ex h IIC T4 Gb **
Ex h IIB T4 Gb e Ex h IIIB T135°C Db

** The Group IIC gas application string is applicable on Boxer series pumps in Conduct version with Conductive TFM diaphragms.



*The curves and performances refer to pumps with immersed suction and free delivery port, with water at 20°C and vary according to the materials of composition.



Distributor material T40 (compressed air circuit)

- POM

Core material

- Polypropylene (with glass filler)

Diaphragm materials

- NBR
- EPDM

Cap materials

- Polypropylene (with glass filler)

O-ring materials

- EPDM
- NBR

Clapet materials

- EPDM
- Natural Rubber

Packaging

Wooden case - cm 113 x 73 x 91 - weight 55 Kg
(the weight refers only to the packaging without the pump inside)

Accessories

- Air regulation kit W8000-20-G

Any colour variations in our polypropylene and PVDF products are due to the special blends of the raw materials used. The use of high levels of glass and long-fiber carbon filler result in a unique colour that does not in any way affect the quality of the product; on the contrary, it points to the high level of content used to ensure outstanding performance.