

# G15 Specifications



## Port Dimensions (16.6 GPM Max.)

### Intake & discharge connection:

Aluminum (ADC-12)	1/2" Female NPT
Pure Polypropylene (PP)	1/2" Female NPT
Stainless Steel (316)	1/2" Female NPT
Kynar®	1/2" Female NPT
Air inlet (incl. ball valve):	1/4" Female NPT
Air exhaust (incl. silencer):	3/8" Female NPT

## Maximum Liquid Temperature\*

Diaphragm Material	Temperature
Buna N	158°F (70°C)
Santoprene® (TPO)	212°F (100°C)
PTFE	212°F (100°C)
Hytrel® (TPEE)	248°F (120°C)

\*The maximum liquid temperature for metal pumps is determined by the elastomer (diaphragm material). Pure Polypropylene pumps have a maximum liquid temperature of 180°F (82°C) regardless of diaphragm material.

## Air Supply Pressure (All Models)

20 – 100 PSI (1.4 – 7 kgf/cm<sup>2</sup>)

## Discharge Volume Per Cycle

All diaphragms: 0.040 - 0.050 gallons

## Maximum Cycles Per Minute

All diaphragms: 373

## Maximum Size Solid

1/32" (1 mm)

## Maximum Dry Suction Lift

Rubber fitted pump capability: 13.5'

PTFE fitted pump capability: 11'

## Air Motor

Aluminum - standard on metal pumps.

Polypropylene - standard on plastic pumps.

## Valve Type

Ball

Notes: Santoprene® fitted pumps include EPDM wetted o-rings.

Buna N is not available with Kynar® pumps.

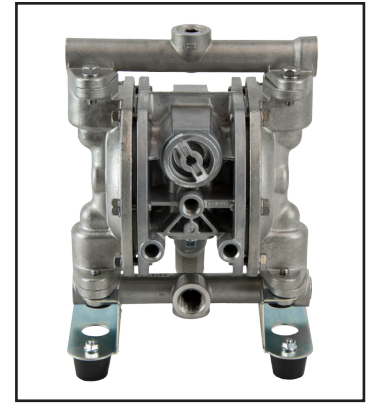


### Aluminum (NPT)

**Dimensions:** 7.64"W x 10.43"H

**Net Wt.:** 11.9 lbs. (5.4 kg)

**Shipping Wt.:** 15 lbs.

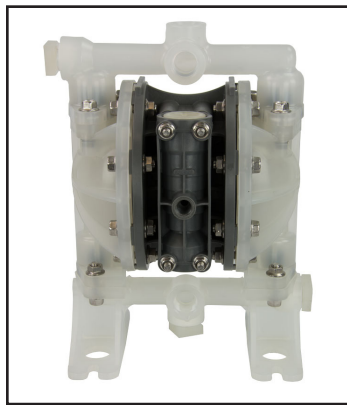


### Stainless Steel (NPT)

**Dimensions:** 7.64"W x 10.43"H

**Net Wt.:** 18.1 lbs. (5.4 kg)

**Shipping Wt.:** 22 lbs.

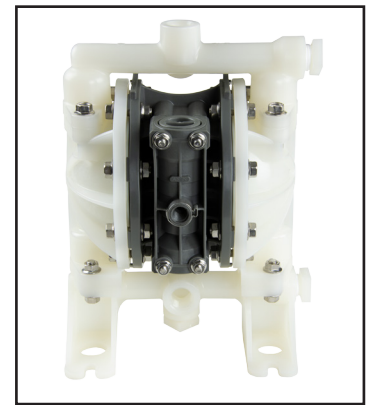


### Pure Polypropylene (NPT)

**NPT Dimensions:** 8.58"W x 11.25"H

**Net Wt.:** 5.74 lbs. (2.6 kg)

**Shipping Wt.:** 9 lbs.



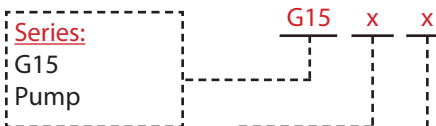
### Kynar® (NPT)

**NPT Dimensions:** 8.58"W x 11.25"H

**Net Wt.:** 7.72 lbs. (3.5 kg)

**Shipping Wt.:** 12 lbs.

## Model Number Nomenclature



**Body Material:**  
 A = Aluminum  
 V = Kynar®  
 P = Pure Polypropylene  
 S = Stainless Steel

**Diaphragm Material:**  
 H = Hytrel® (TPEE)  
 N = Buna N (NBR)  
 S = Santoprene® (TPO)  
 T = PTFE

## G15 Global Series Models

G15AH	G15SH	G15PH	G15VH
G15AN	G15SN	G15PN	G15VS
G15AS	G15SS	G15PS	G15VT
G15AT	G15ST	G15PT	



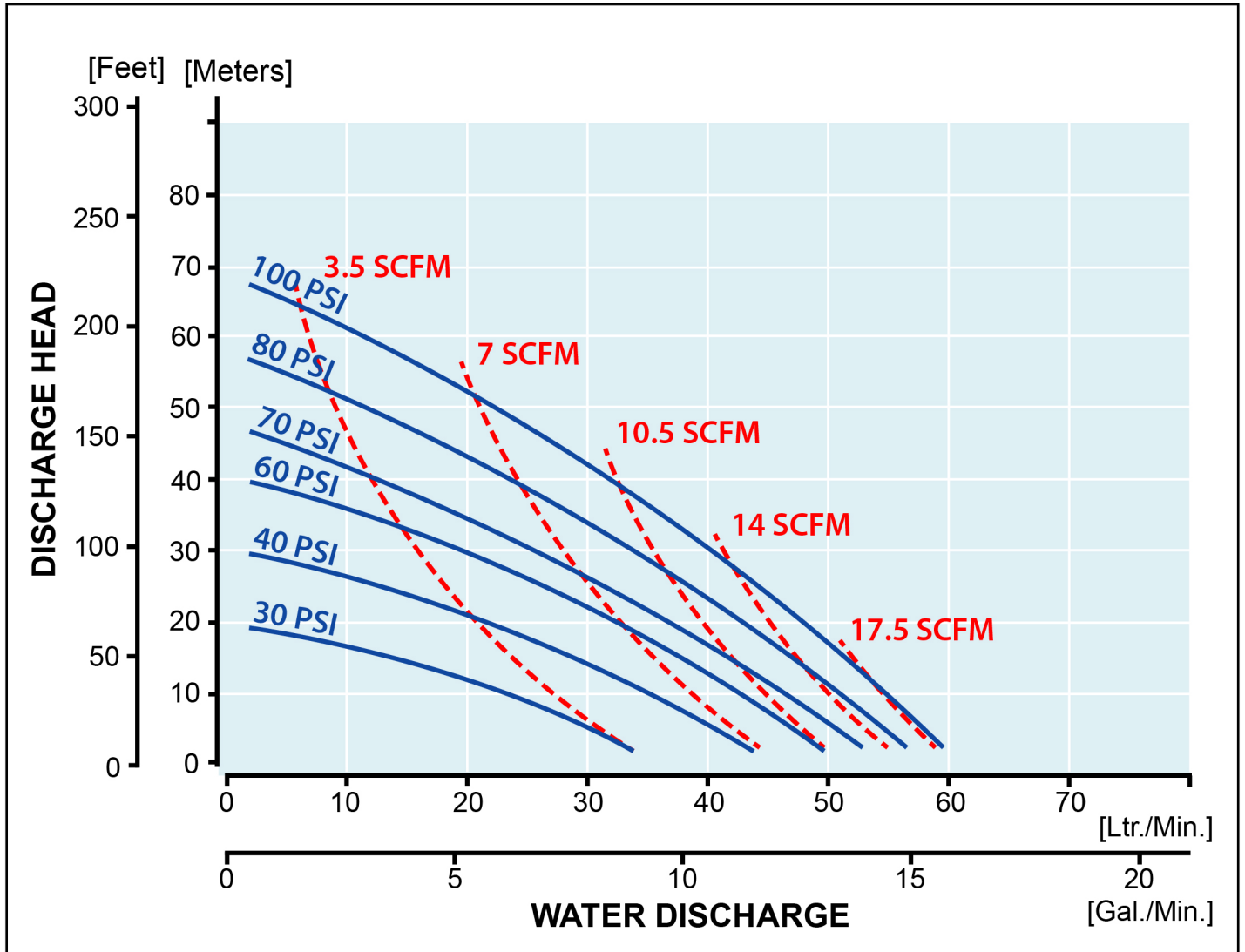
[aodd.ir](http://aodd.ir)

**Yamada America, Inc.** 955 E. Algonquin Rd., Arlington Heights, IL 60005  
 USA Toll-Free: 800-990-7867 | Phone: 847-631-9200 | Fax: 847-631-9273  
 Email: [sales@yamadapump.com](mailto:sales@yamadapump.com) | Web: [yamadapump.com](http://yamadapump.com)

© 2022 Yamada America, Inc.

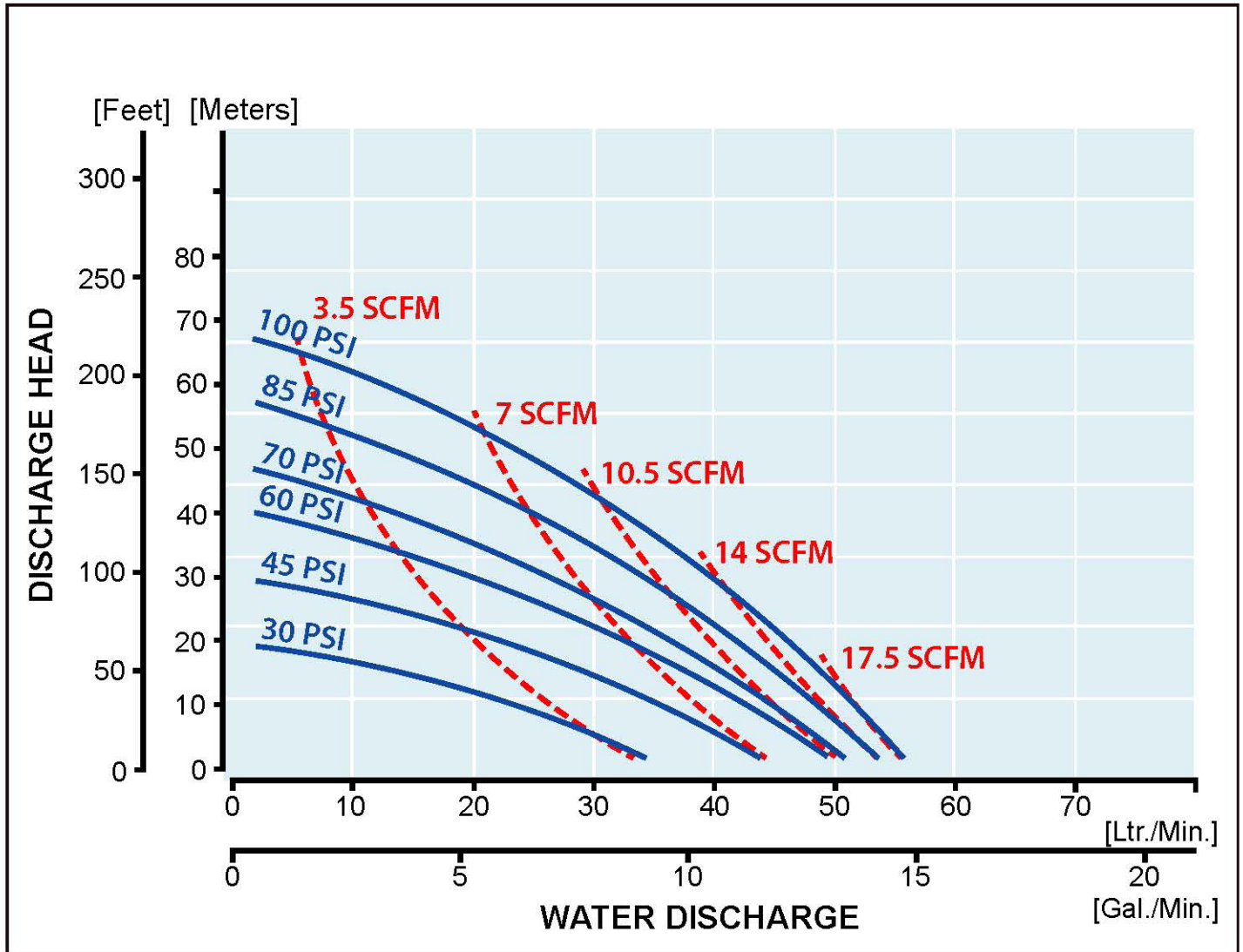
# G15AN Performance Curve

**G15 Buna N Rubber Diaphragm Performance Curve (Aluminum)**



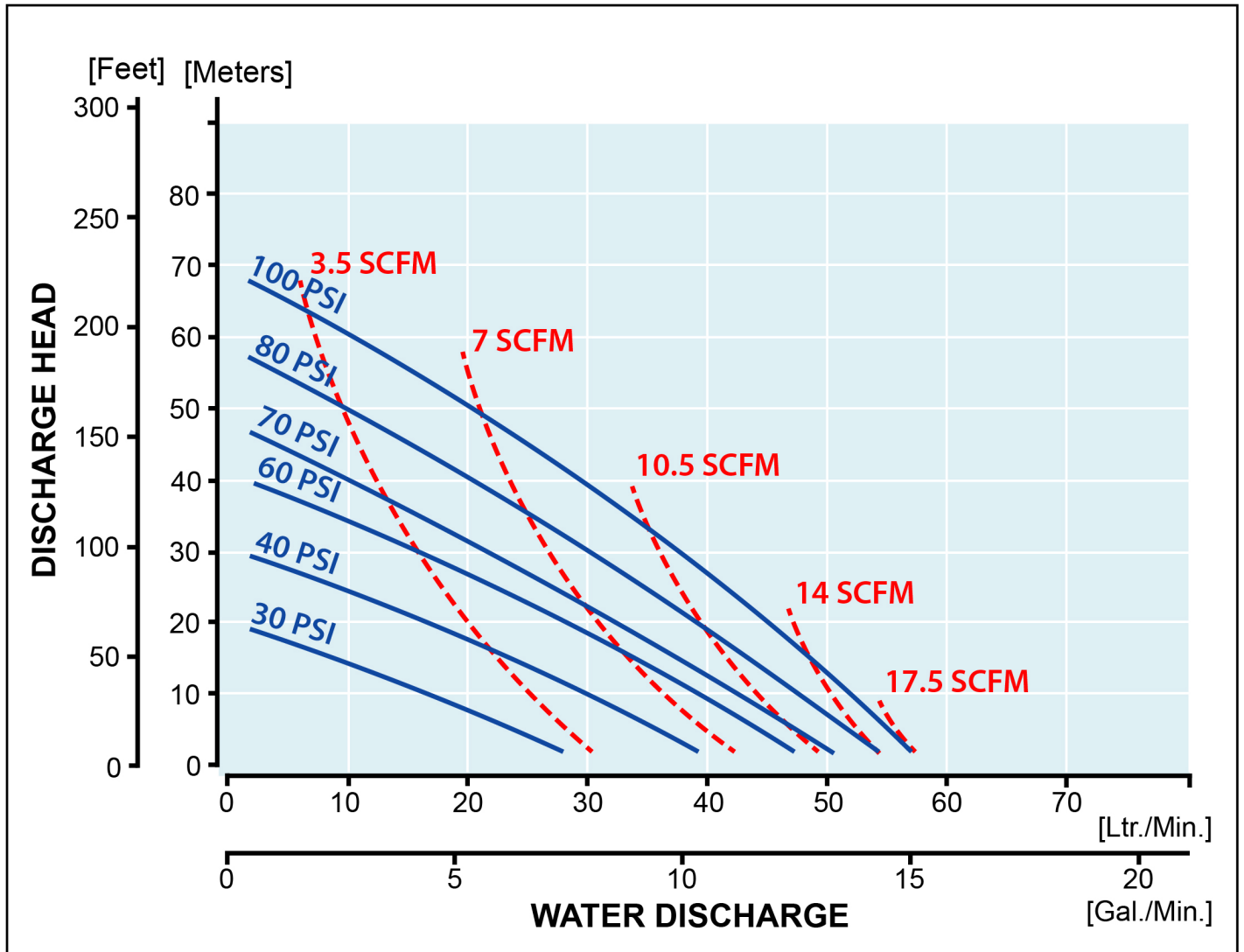
# G15AH, G15AS Performance Curve

## G15 Hytrel® & Santoprene® Diaphragm Performance Curve (Aluminum)



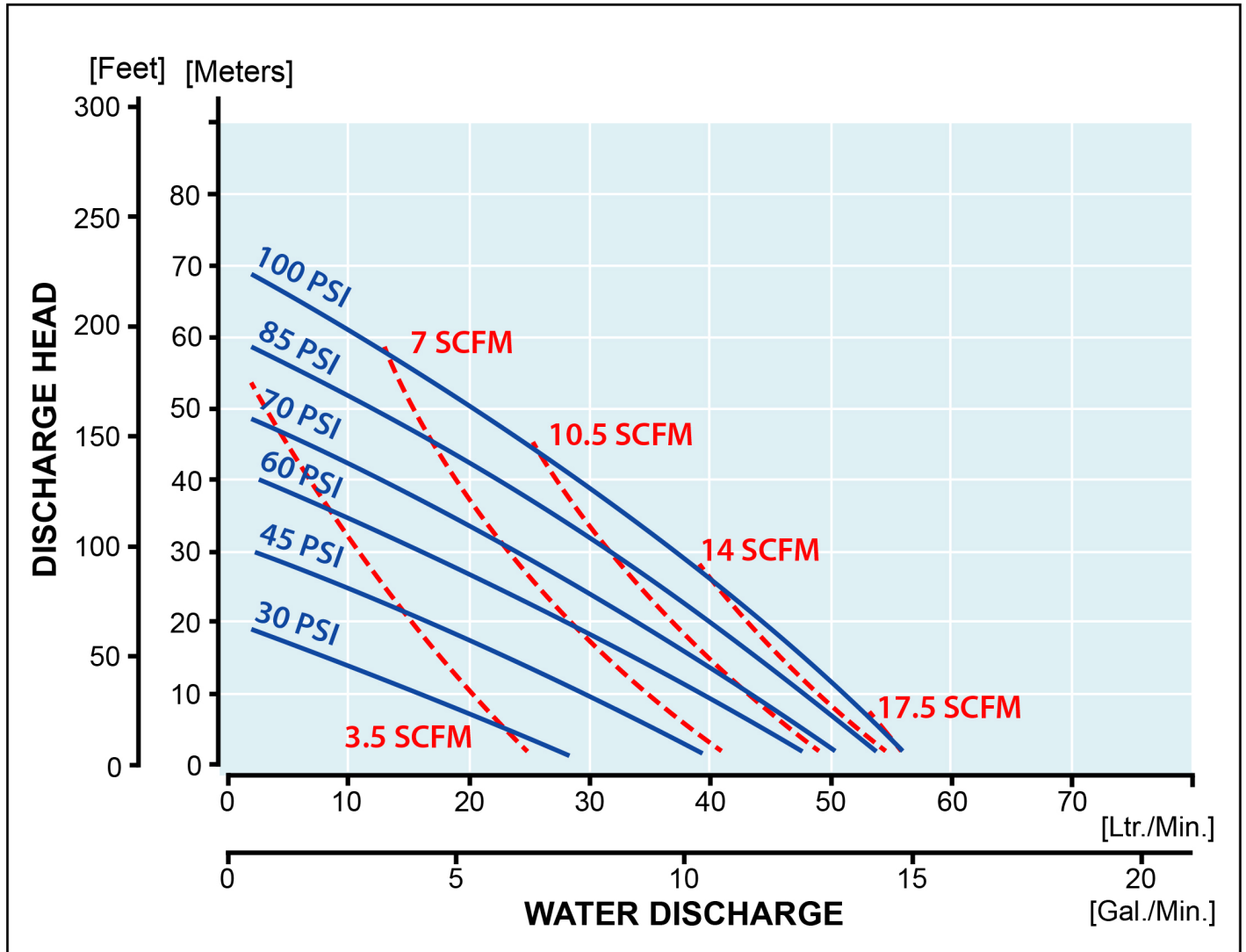
# G15AT Performance Curve

## G15 PTFE Diaphragm Performance Curve (Aluminum)



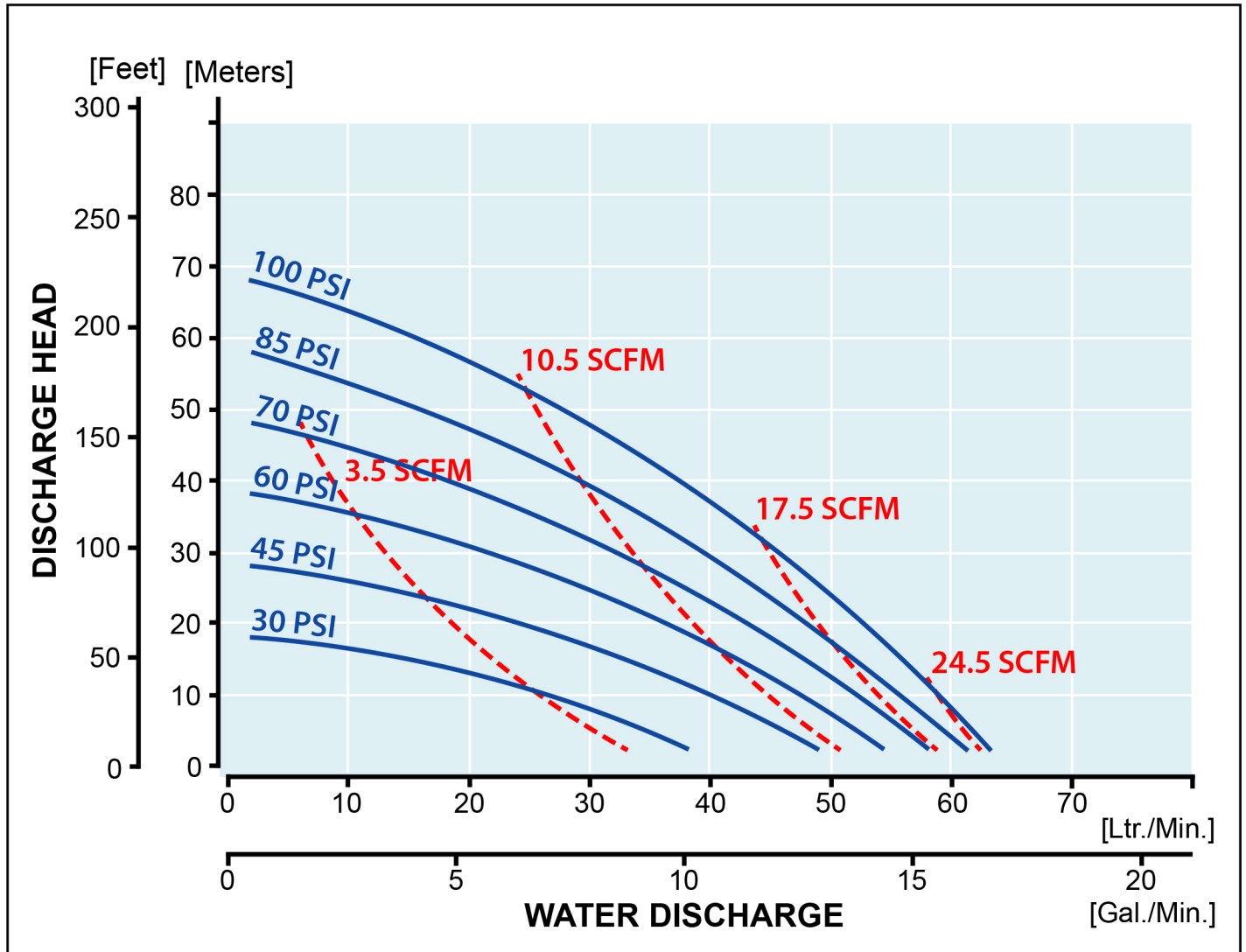
# G15S Performance Curve (all)

## G15 Rubber & PTFE Diaphragm Performance Curve (Stainless Steel)

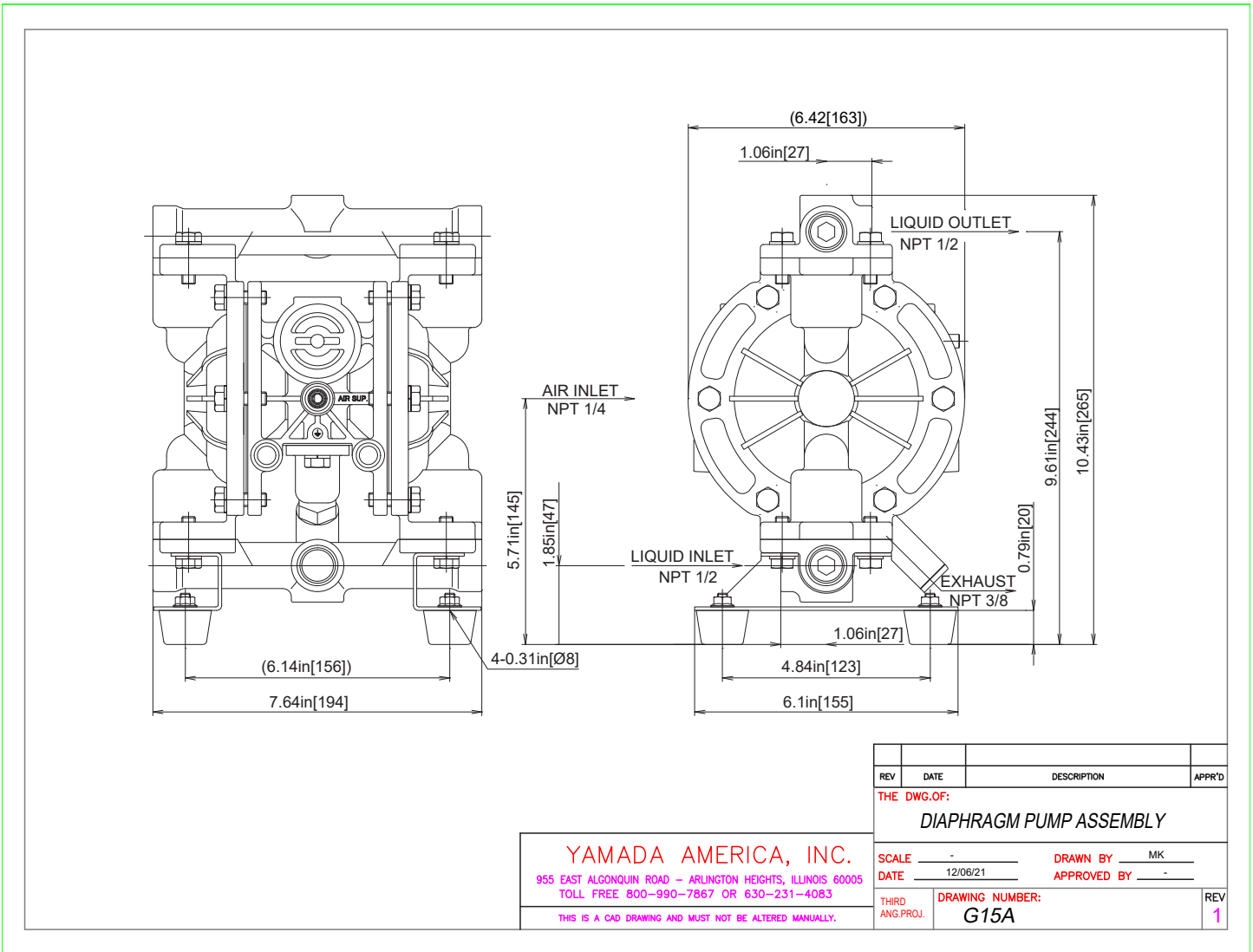


# G15 Plastic Performance Curve (all)

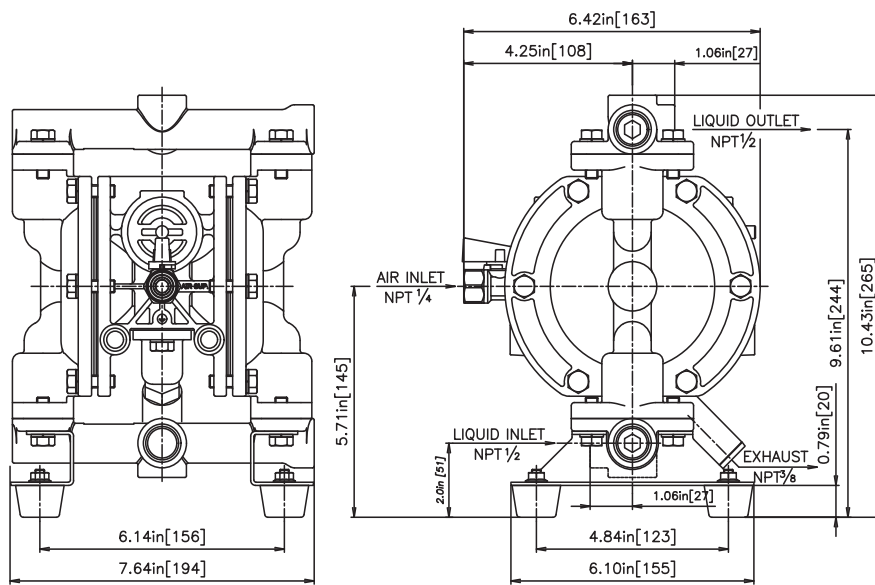
## G15 Rubber & PTFE Diaphragm Performance Curve (Polypropylene & Kynar®)



# G15 Aluminum



# G15 Stainless Steel

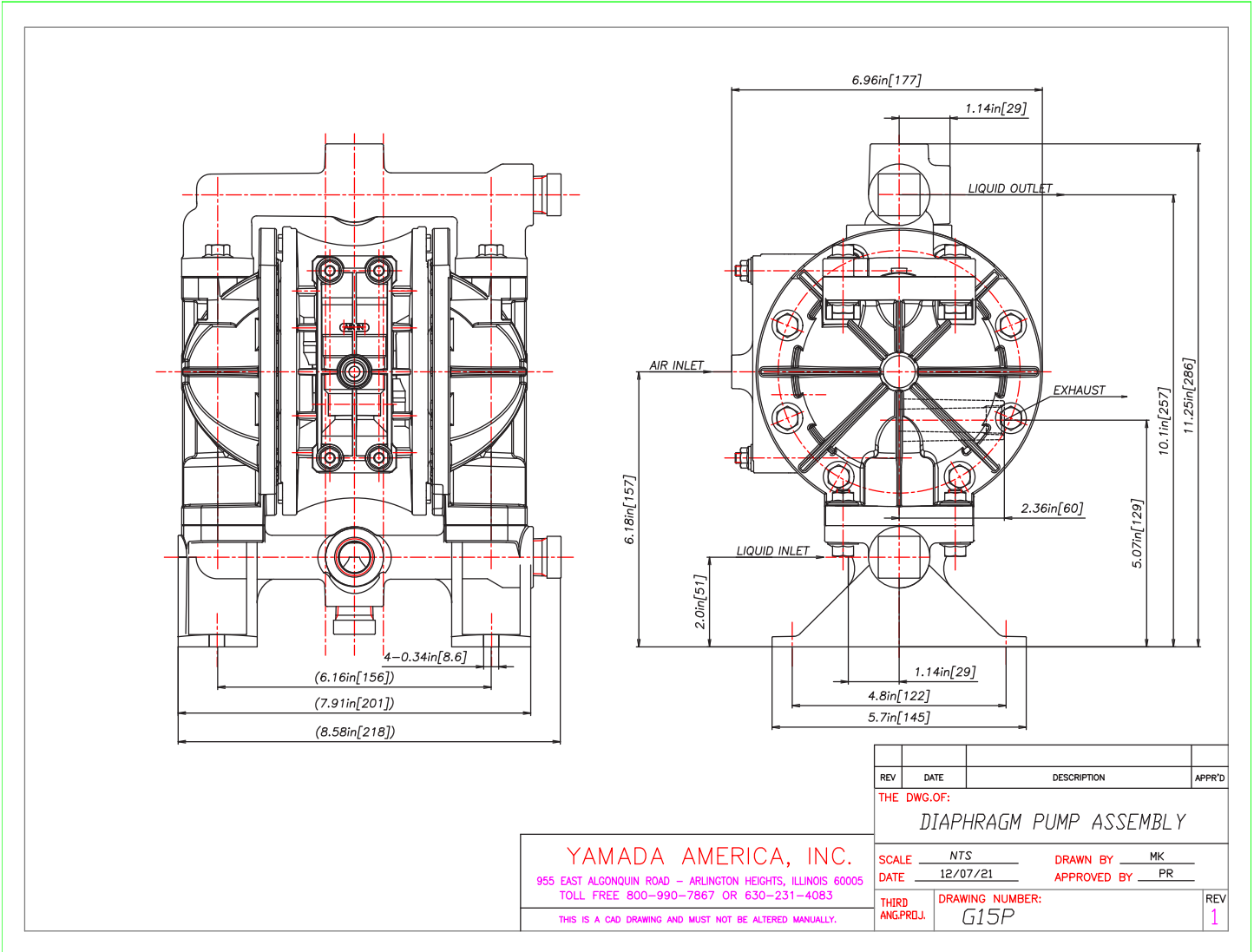


REV	DATE	DESCRIPTION	APPR'D
THE DWG.OF:			
YAMADA DIAPHRAGM PUMP			
SCALE	NTS	DRAWN BY	MK
DATE	12/06/21	APPROVED BY	PR
THIRD ANG.PROJ.	DRAWING NUMBER:		REV
	G15S		1

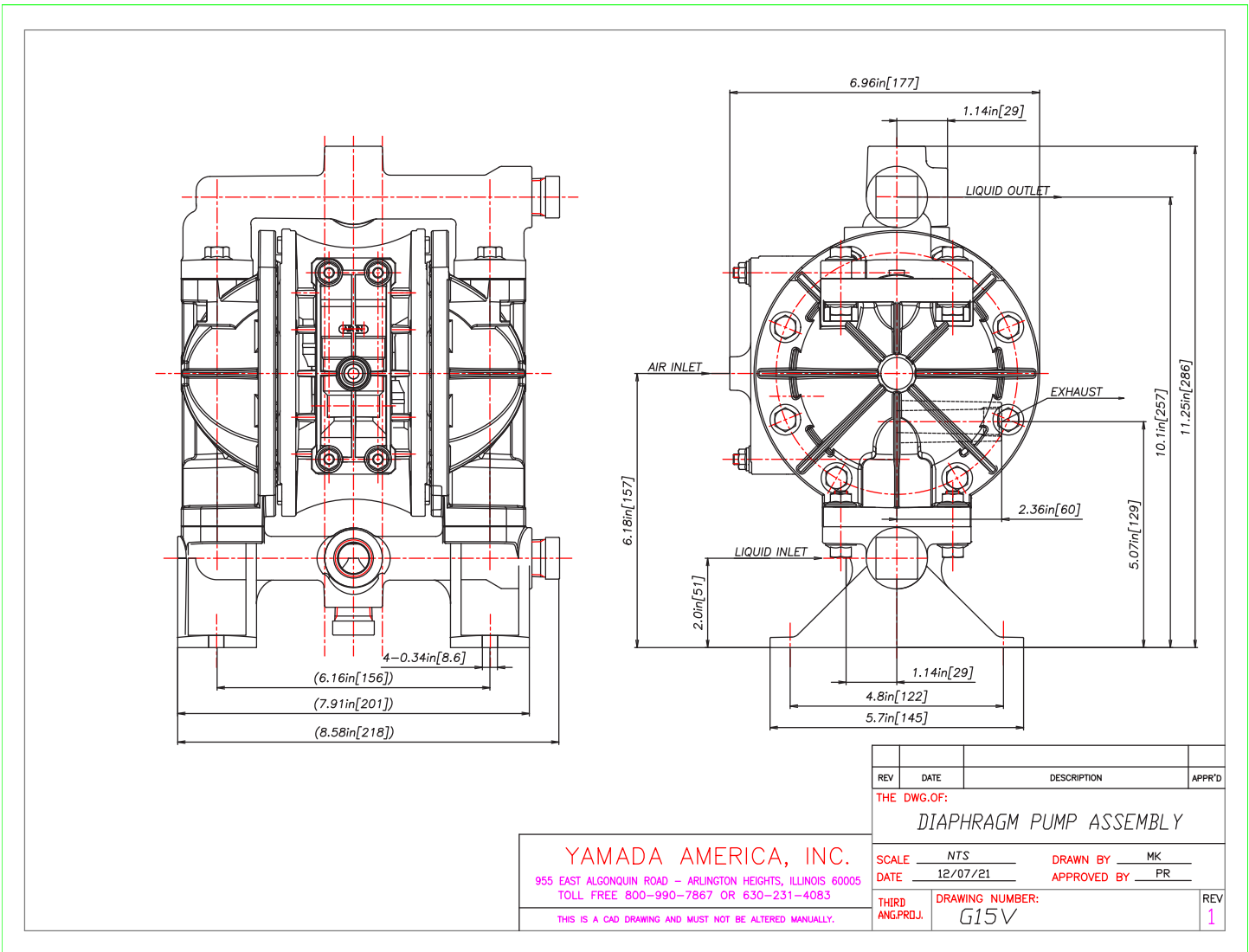
**YAMADA AMERICA, INC.**  
 955 EAST ALCONQUIN ROAD - ARLINGTON HEIGHTS, ILLINOIS 60005  
 TOLL FREE 800-990-7867 OR 630-231-4083  
 THIS IS A CAD DRAWING AND MUST NOT BE ALTERED MANUALLY.



# G15 Polypropylene



# G15 Kynar



**AutoCAD**® is a registered trademark of Autodesk, Inc.

**Hytrel**® is a registered trademark of E.I. du Pont de Nemours and Company.

**Kynar**® is a registered trademark of Arkema.

**Nordel**™ is a trademark of DuPont Dow Elastomers.

**Ryton**® is a registered trademark of Chevron Phillips Chemical Company.

**Santoprene**® is a registered trademark of Advanced Elastomer Systems.

**Viton**® is a registered trademark of DuPont Performance Elastomers.

**Swagelok**™ & **VCR**™ are trademarks of the Swagelok Companies.

**Flaretek**® is a registered trademark of Entegris.

**Garlock ONE-UP**® is a registered trademark of W.L. Gore & Associates.

**Yamada**® is a registered trademark of Yamada America, Inc.

**SolidPRO Designed to Pump Fluids Containing Solids**® is a registered trademark of Yamada America, Inc.

**Xtreme Duty Pro XDP**® is a registered trademark of Yamada America, Inc.

**The Proof's in the Pump**® is a registered trademark of Yamada America, Inc.

**The Proof is in the Pump**® is a registered trademark of Yamada America, Inc.

**Engineered to Perform. Designed to Outlast.**® is a registered trademark of Yamada America, Inc.

Due to Yamada's continued commitment to product improvement, specifications may change without notice.